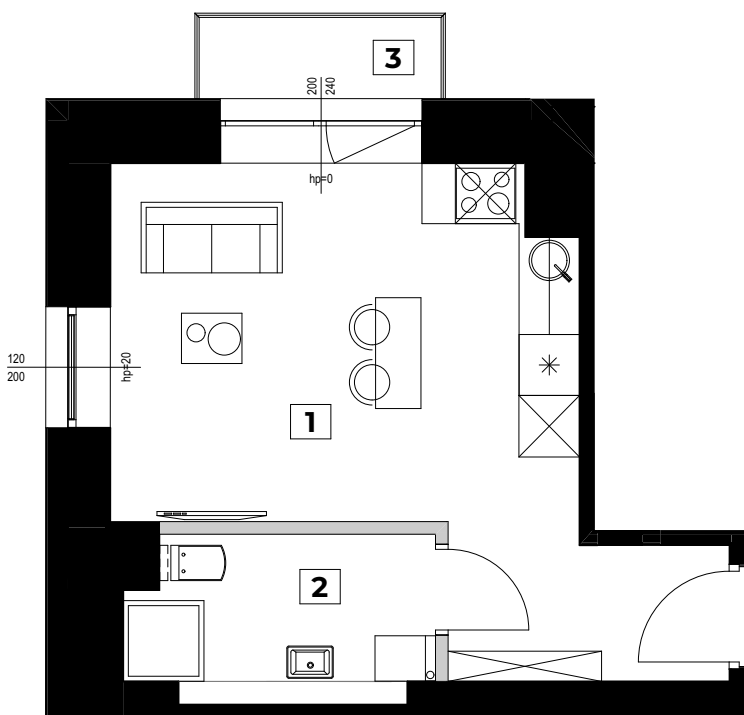
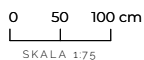


|                    |                      |
|--------------------|----------------------|
| 1. salon z aneksem | 20,61 m <sup>2</sup> |
| 2. łazienka        | 4,78 m <sup>2</sup>  |
| 3. balkon          | 1,93 m <sup>2</sup>  |



ściany możliwe do zmian  
w ramach ustaleń lokatorskich

ściany niepodlegające  
zmianom lokatorskim

